

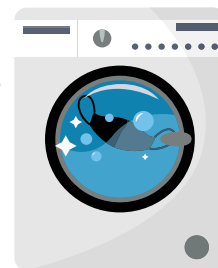
Cloth Face Coverings



Wear a cloth face covering, such as a mask or bandana, any time you are not on your bed/mat



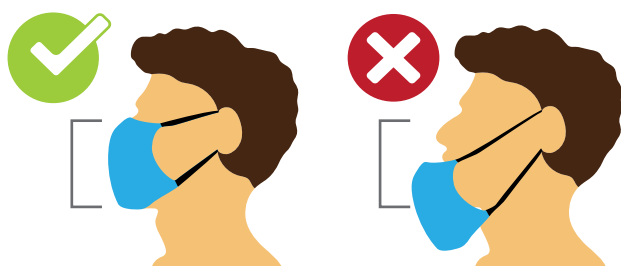
Make sure you have your mask machine washed regularly



Follow the facility's cleaning procedures

Your cloth face covering should:

Fit snugly but comfortably against the sides of your face



Be secured with ties or ear loops



Removing your face covering:

Be careful not to touch your eyes, nose, or mouth when removing your face covering



Wash your hands immediately after removing your face covering



Face coverings should not be used on:

- children under age 2
- anyone who has trouble breathing
- anyone who can't remove it without assistance

SALT LAKE COUNTY
HEALTH DEPARTMENT

Salt Lake County Health Department
promotes and protects community
and environmental health

[SaltLakeHealth.org](https://www.saltlakehealth.org)